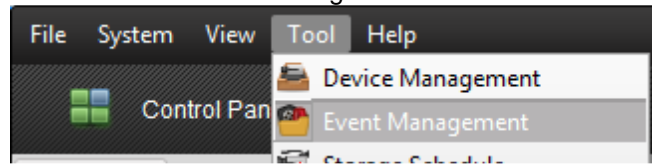
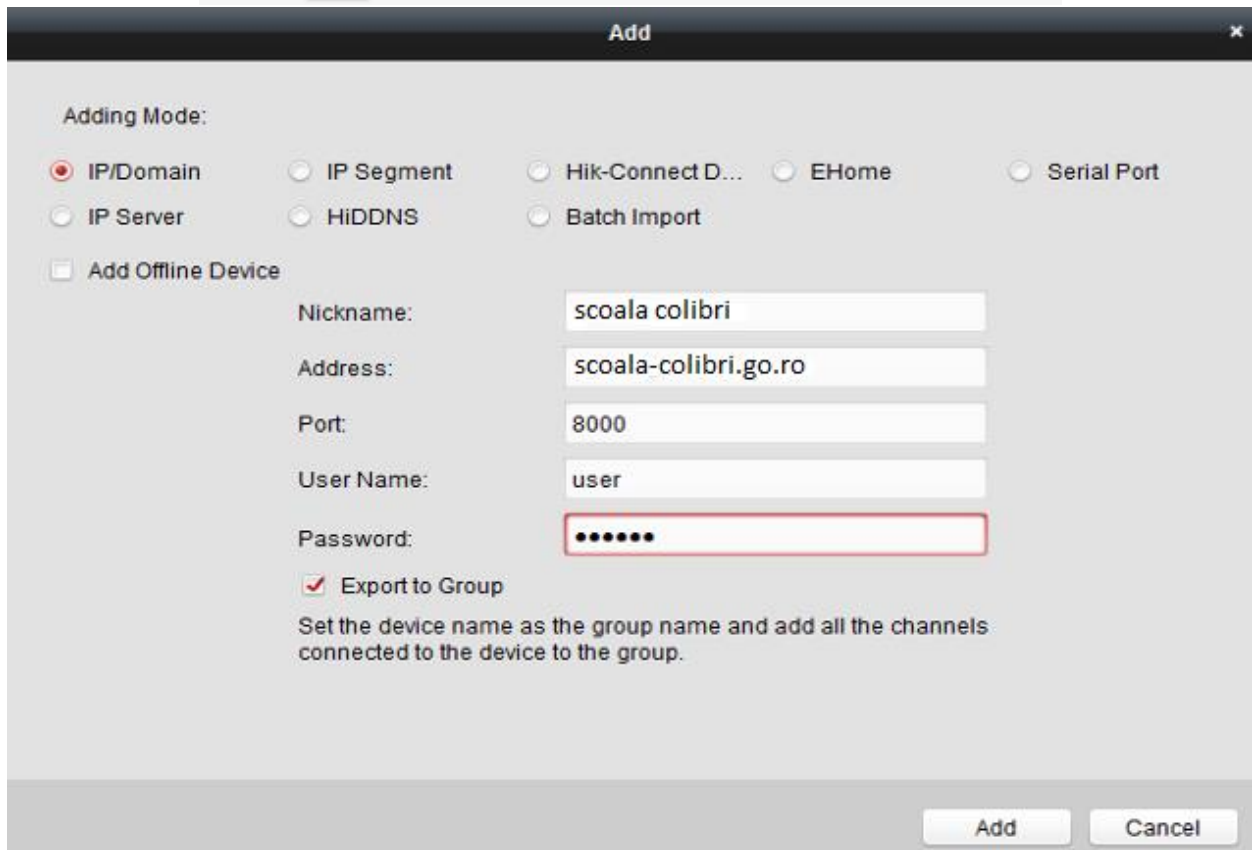
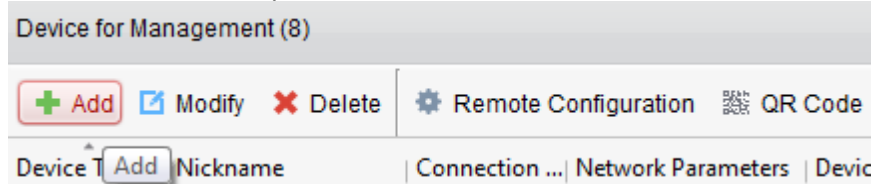


1. Se download-eaza aplicatia IVMS 4200 pentru WINDOWS/MAC de [aici](#). Se instaleaza aplicatia.
2. Porniti aplicatia si deschideti tab-ul "Device management".



3. Apasati butonul "Add device" si completati setarile.



4. Pentru a vedea camerele live selectati tab-ul "main view" sau din meniul "view"->"main view"

